

2017

#### ECONOMICAL

These economical machines provide a great way to treat your wastewater without chemicals. Reduce your waste and save on disposal costs.

#### TWO VERSIONS

Standard Ci series use a recbag for collection of waste residue. CiQ series has rotating boiler scraper system that keeps walls and base free of solid build-up and requires no Recbag.

#### ENVIRONMENT FRIENDLY

Treat wastewater and reduce waste. Less waste for removal from site. No emissions from plant. Can be part of ISO 14000.

#### SAFE AND EASY TO USE

All machines CE approved. Simple controls for ease of use.

#### FREE TEST ANALYSIS OF YOUR WASTE WATER

Send us a sample of your waste water for laboratory testing. We will provide analysis results and recommend suitable equipment.



## Economic Ci Series for Water

### Distatic Ci series

The economical answer to wastewater treatment. The **Ci series** provides small producers of wastewater with a simple low cost method of water treatment.

These models are ideal for dealing with waste ink, paints and oil emulsions and much more besides.

The **Ci** range from 15 litres to 160 litres capacity provides a means to close loop waste streams for ink, paints, adhesives or almost any wash solution. Recovered water that is distilled, can be used again or in most cases can be discharged to sewer. Waste disposal is minimised.



The **Ci series** is based on the well proven range of solvent distillers and works in the same way. Unlike the solvent distillers, the **Ci series** is not required to be explosion-proof and because water requires more energy to evaporate it, the units are fitted with additional heating power and a timer that works up to 24 hours.

- ◆ **Quiet in operation**
- ◆ **No air pollution**
- ◆ **Saves money**
- ◆ **Helps the environment**
- ◆ **Reduce waste disposal costs**
- ◆ **Easy to install**
- ◆ **Simple to operate**
- ◆ **Leasing plans available**



The automatic units are easy to install and simple to use. Recycled water for reuse or disposal to drain.



**Distatic CiQ series option**  
Rotating Scraper system inside boiler requires no Recbags.

The number one choice

## Ci Series Models Available

### TECHNICAL SUPPORT

Help and advice is available free before, during and after purchase. We will help you select the right machine and advise on installation. We can also install, commission and train operators if required.

### SERVICE

Like any machinery, our distillers require servicing periodically. Our engineers are equipped to perform services at your premises if required. Consumable items and spare parts are readily available from stock.

### TURNKEY SOLUTIONS

For those requiring a turnkey solution to their recycling needs, we can design and install everything required to meet your demands.



Ci15AX  
15 litre



Ci30Ax/CiQ30Ax  
30 litre



Ci60Ax/CiQ60Ax  
60 litre



Ci120Ax/CiQ120Ax  
120 litre



Ci160Ax  
160 litre

The Standard Ci series models are fitted with stainless steel boiler and condensers. The standard distillers use air cooled condensers but water cooled versions are available as a no cost option in most cases.

The distillers are available in load capacities of 15, 30, 60, 120 and 160 litres. The actual load capacity should not be confused with the total boiler capacity which is always greater. Our distillers are constructed in a way that always provides sufficient free space inside the boiler to ensure efficient operation. The model number denotes the load capacity, a Ci15 holds 15 litres but the overall capacity is 20 litres.

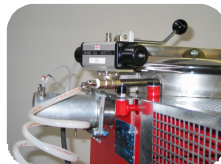
During a cycle, the clean distilled water flows out of the distiller and is collected in a can ready for reuse or disposal. The cycle time varies according to the type of contamination and quantity but will be around 14 hours for one batch. The cycle is automatic and will stop after the preset time allowing the distiller to be left unattended. The waste residues such as paint, inks and oils etc are collected in a disposal bag called a *Recbag*. Using a bag eliminates the need for boiling cleaning after every cycle and is a quick and easy method that takes only a few minutes.



All models are equipped with an LCD with memory function timer, total time, remaining process time and service due indicator

### OPTIONS

Semi-automatic loading by pump



Manual valve for liquid residue unloading



  
**SOLUTEX**  
RECYCLING SYSTEMS

## Technical Information

### ROTATING BOILER

All models feature a boiler that can easily be rotated. This allows user's to unload liquid residues or perform maintenance easily. On large models power assistance is provided.

### OPTIONS

A wide range of options are available including:

- Semi-automatic loading
- Manual valve for residue unload
- Load pipe for connecting to a pump
- Anti-foam discs
- Boiler viewing glass
- Collection tanks

### REFERENCES

With 38,000 units installed world-wide you can be sure that there is a unit working in a

similar application to yours.

Many of the worlds leading companies can testify to the quality, reliability and cost effectiveness of the equipment..

For more information on any of our products or services please contact us:

Solutex Ltd

Tele: +44 (0) 1691 622225

Email: sales@solutex.co.uk

Web: www.solutex.co.uk

The units use the principle of distillation to produce purified water for re-use or disposal. Through this simple distillation process, they separate the contaminants (resins, pigments, paints, oils inks, etc.) from water.

### WORKING PRINCIPLE

The boiling of the polluted water takes place in a boiler made of stainless steel that forms a unique unit together with a heating jacket filled with diathermic oil that is heated by one or more electrical heating elements. The vapours are conveyed to a condenser cooled by air or water. The treated water flows into a container. There are no emissions from the unit during operation.

### CLEANING

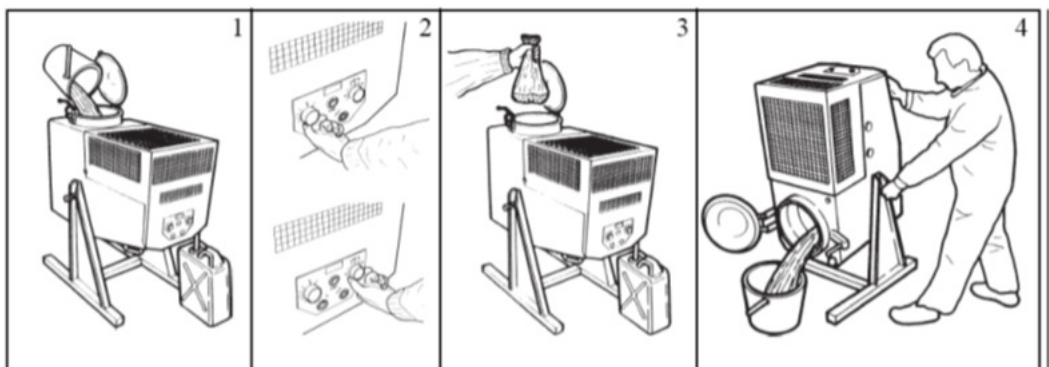
Cleaning of the unit is quick and easy. For liquid residues, the boiler is easily rotated to discharge the contents (5). In the case of solid residues (paints, resins, polymers, pigments etc.) the concentrate is collected inside a special disposable bag named *Recbag*, this avoids manual cleaning of the boiler surface. Liquid residues can also be discharged via the optional manual unload valve.

### SAFETY

The unit operates at atmospheric pressure. Safety devices monitor heating and distillate temperatures and the machine stops automatically if a fault is detected. All units are manufactured in accordance with European standards and are CE marked.

### OPERATING

The distillation cycle is fully automatic. The operator's work is limited to simply loading the wastewater (1), setting the distillation time and temperature (2). The water automatically discharges into a Can or tank (3). Finally, unloading the solid or liquid residues (4-5).



MODEL	BOILER CAPACITY	LOADING CAPACITY	POWER	PROTECTION	DIMENSIONS	WEIGHT
	LITRES	LITRES	KW		mm	kg
Ci15 Ax	20	15	1.62	AD-T IP44	550 x 650 x 1300	54
Ci30 Ax	40	30	3.22	AD-T IP44	600 x 1000 x 1160	110
Ci60Ax	103	60	6.60	AD-T IP44	690 x 1100 x 1600	180
Ci120Ax	210	120	13.60	AD-T IP44	1510 x 1140 x 2060	361
Ci160 Ax	250	160	22	AD-T IP44	1510 x 1200 x 2100	433